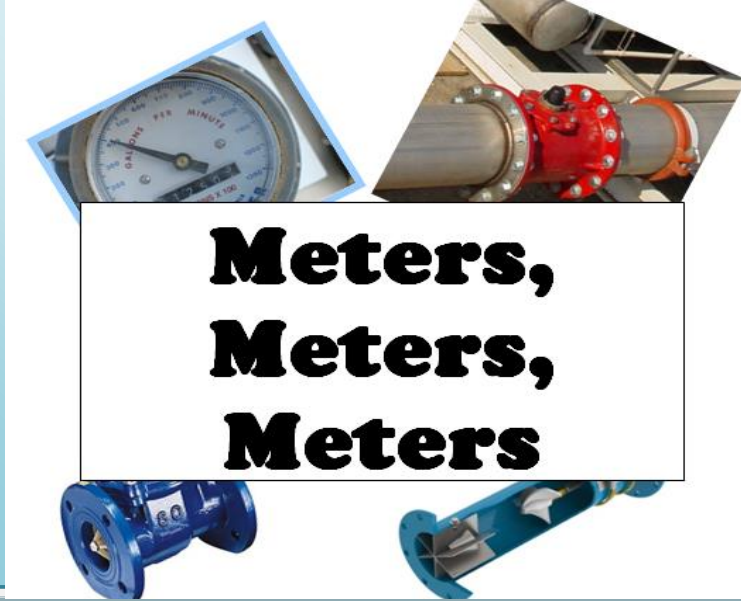


# The Water Table



## Reminder to Check Your Meters

Since the GMD 4 requirement to install water meters, many of them are beginning to malfunction. To prevent penalties you are required to check your meter every two weeks. Taking a picture is recommended. If the meter has not been checked every two weeks proof has to be provided on how much was pumped. You will be required to submit one of the following: three years of electric records with operating hours, three years of natural gas records with therms calculated, remote irrigation management records (AgSense, WagNet, etc.), or a secondary meter that is approved and installed per the Division of Water Resources rules and regulations. If the meter has operated all year and has not worked, a Notice of NonCompliance will be issued for the first offense and a \$500 fine for the second offense. If you are utilizing a different method of keeping accurate secondary meter records then please contact our office and inform us of other alternate ways.

The Division of Water Resources also requires a form to be submitted when your meter is repaired or replaced. Many times the meter repairman will fill most of the form out for you. It is your responsibility to submit the form and should not assume the meter repairman submitted it for you. If you need assistance completing the form please contact our office and we will help you get it submitted.

### Contents

#### Special Interest Articles

Meters, Meters, Meters	1
Groundwater Model	2
Conservation = Profitability	2
Water Use Reports	3
Water Table Data	3

#### Individual Highlights

Dan's Field Notes	2
Pumping the Tailwater	4



By Glenn & Gary McCoy via CartoonStock

## Updated Groundwater Model Coming Soon!!

GMD 4 has signed a contract with the Kansas Geological Survey (KGS) and the Kansas Water Office (KWO) for a new groundwater model . The new model, expected to be completed in the

Summer of 2020, will allow staff to run accurate local scenarios on aquifer response to a variety of variables. Once completed and staff is trained we will be presenting it the public.

***“Aquifer depletion is a largely invisible threat, but that doesn’t make it any less real” ~ Lester R. Brown***

### Dan’s Field Notes

For those water rights affected by the GMD 4 LEMA you will have additional metering requirements and are required to check your meter every **two weeks**. It will be required that you have an alternate way to meter your water usage. Some of those acceptable ways are:

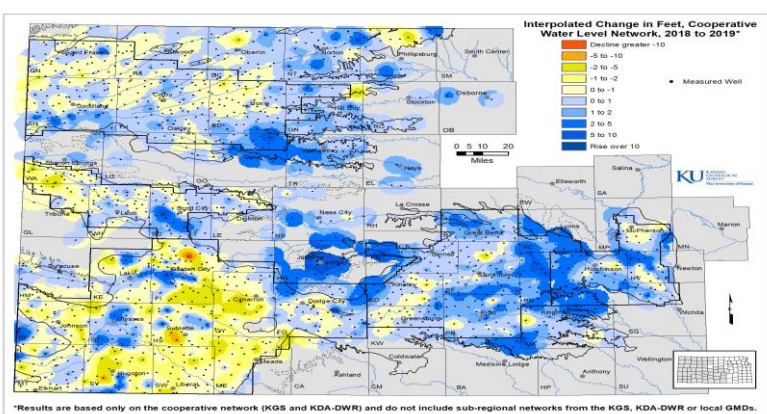
- AgSense
- Pivot hours
- Electric hours
- Dated Pictures
- Log Book
- Additional meter

## Water Conservation = Profitability

Within the last few years there have been several studies on profitability and reduced pumping. There are many variables that go into the equation and each study has its own parameters. Precision agriculture is a common term in all of these studies. Producers who use a variety of precision agriculture techniques have been shown to be more profitable because the input costs are considerably less when compared to maintaining desired yields. Some practices have shown that yields can be maintained with less water and others show a slightly less yield but the profitability comes with less input costs. How can you increase profitability with less pumping? We encourage you to take a look at the studies out there and find what works best for your operation.

# Water Use Reports

A reminder that when you report water usage on your water use reports that your meter readings should be from January 1<sup>st</sup> to December 31<sup>st</sup> of the respective year for reporting. As water use reports are due on March 1<sup>st</sup>, meter readings should be submitted that reflect what the meter read on December 31<sup>st</sup> of that year, not March 1<sup>st</sup> of the following year. Failure to report the December 31<sup>st</sup> meter reading could result in penalties and fines if caught.



## Water Table Data

In January of every year the Kansas Geological Survey (KGS) measures wells throughout the High Plains Aquifer. The above map shows the results of those measurements with an average water level change for GMD 4 of +0.26 feet. This data shows that with above average rainfall and unfortunate hail events resulting in less pumping, the aquifer responds.



**PUMPING THE TAILWATER**  
By Ray Luhman

IS DOING NOTHING A TAKINGS???

Burke Griggs, water attorney and Associate Professor of Law at Washburn University, gave a very good address at the 2018 Governor's Conference on the Future of Water in Kansas in Manhattan in November. He covered many topics relating to Kansas water law and addressed many issues important to the state as a whole, and to various regions of the state. His comments can be accessed on you tube at <https://www.youtube.com/watch?v=sTkHwmSt5X0>.

One interesting thing, to me at least, that he brought up was an idea about takings as it relates to water rights over the Ogallala. He expressed the idea that the failure of agencies or organizations to reduce pumping in an effort to prolong the life of the non-sustainable aquifer could be considered to be a takings given the fact that the years of use gained by current reductions would be taken away.

Don't know if I totally agree, but makes for an interesting thought process. What do you think?

Ray



### NW KS GMD 4

1290 W 4th  
PO Box 905  
Colby, KS 67701  
Address Service Requested

785-462-3915  
Fax: 785-462-2693

*Like us on Facebook!*

Find us on the Web:  
[www.gmd4.org](http://www.gmd4.org)



## Important Dates

**Monthly Board Meetings – First Thursday of every month @ 9 am.  
(Except February & December)**

**June 1<sup>st</sup>: Last day to file late water use reports. If not filed by this date  
a \$1000 per file number fee will be assessed and you will be ordered  
not to pump until it is submitted.**

## Staff and Board of Directors

- Ray Luhman – Manager [rluhman@gmd4.org](mailto:rluhman@gmd4.org)
  - Shannon Kenyon – Assistant Manager [skenyon@gmd4.org](mailto:skenyon@gmd4.org)
  - Dan Simmering – Field Technician [dee@gmd4.org](mailto:dee@gmd4.org)
  - Jody McCain – Administrative Assistant [jmccain@gmd4.org](mailto:jmccain@gmd4.org)
- |                             |                 |                      |
|-----------------------------|-----------------|----------------------|
| Brent Rogers – President    | Karen Flanagin  | Lynn Goossen         |
| Shane Mann – Vice President | Ted Nighswonger | Monty Biggs          |
| Jeff Deeds – Secretary      | Nathan Emig     | Vacant- Logan County |
| Roger Zweygardt – Treasurer | Brett Oelke     |                      |

NW KS GMD 4  
1290 W 4th  
PO Box 905  
Colby, KS 67701  
Address Service Requested

Non-Profit  
U.S. Postage  
PAID  
Permit #12  
Zip + 4  
Colby, KS