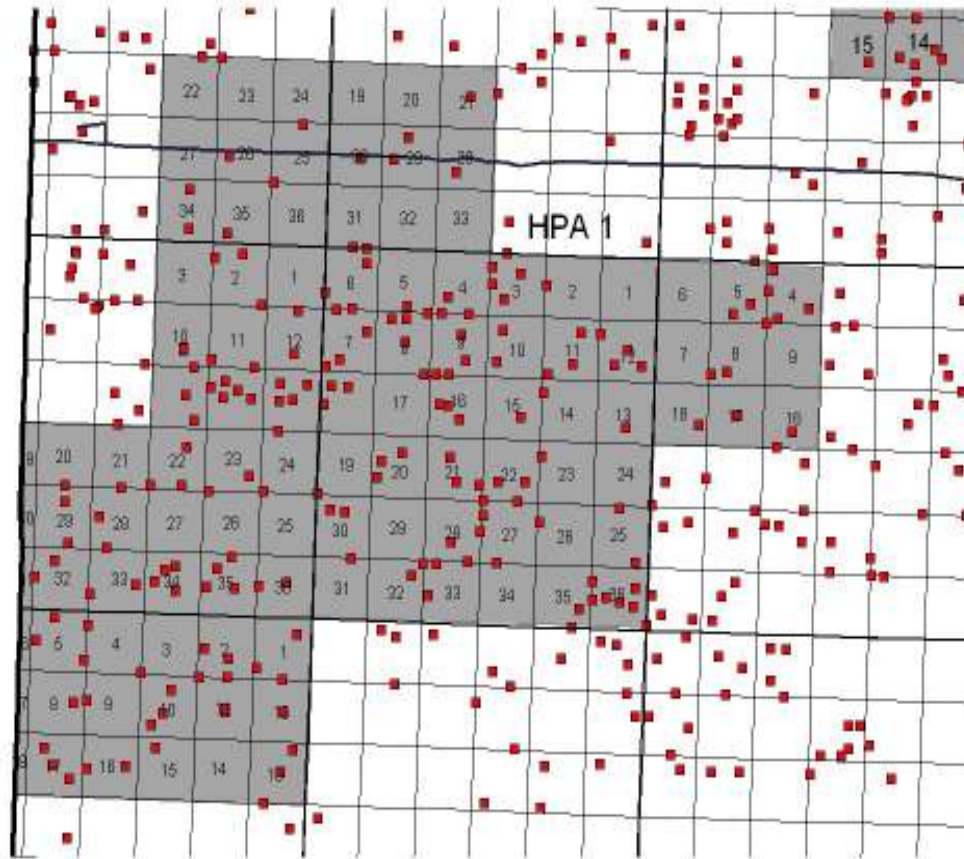

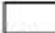






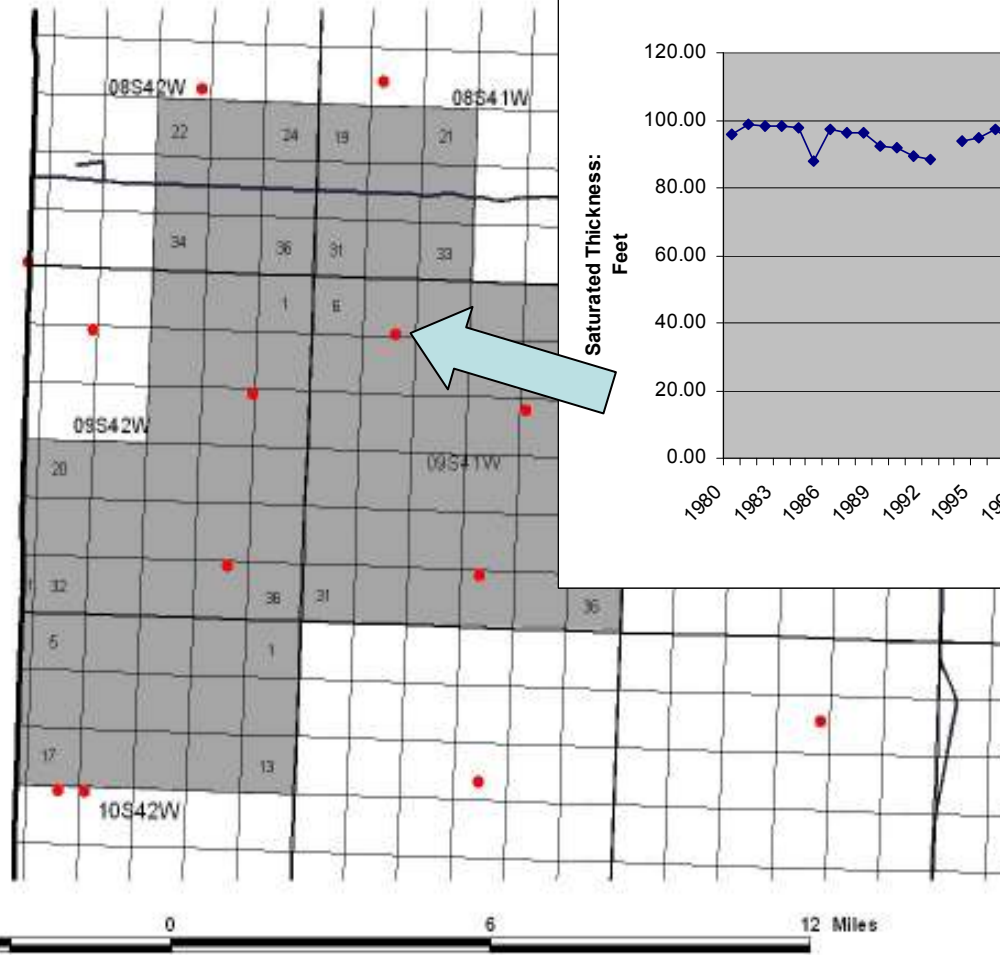
SH-1 HPA Wells



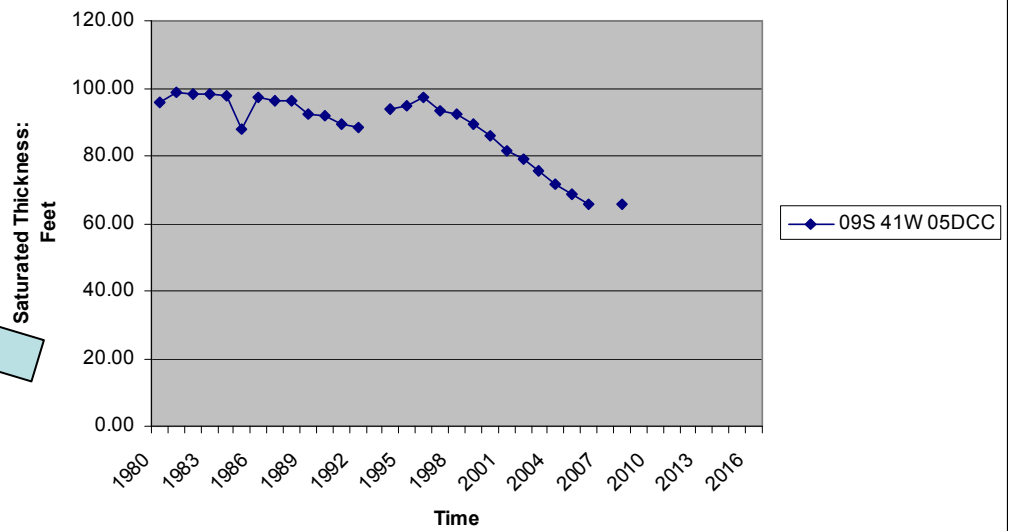
-  NW Cty Bounds
-  Gmd 4 Twps
-  Kdot_roads_04.shp
-  2006 WIMAS set
-  NW Sections -PLSS
-  GMD4 HPA's



SH-1 HPA Sections and Observation Wells



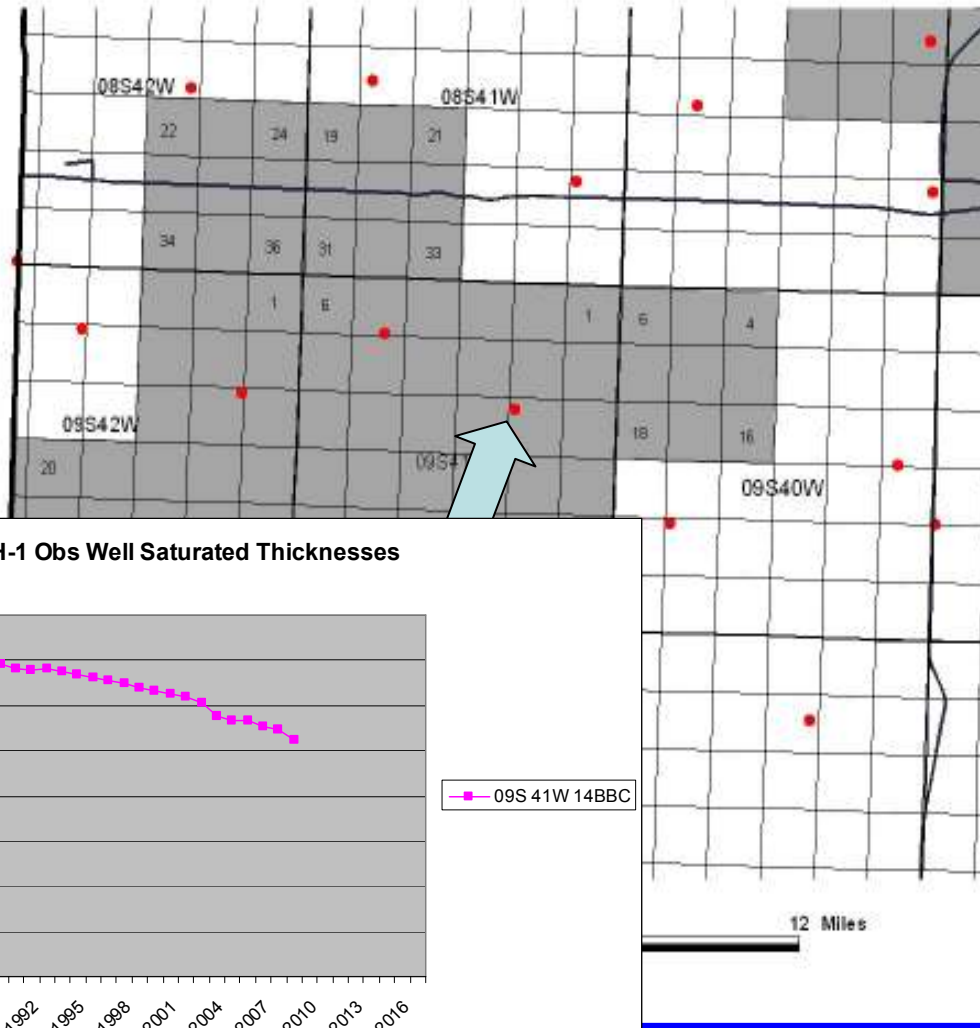
SH-1 Obs Well Saturated Thicknesses



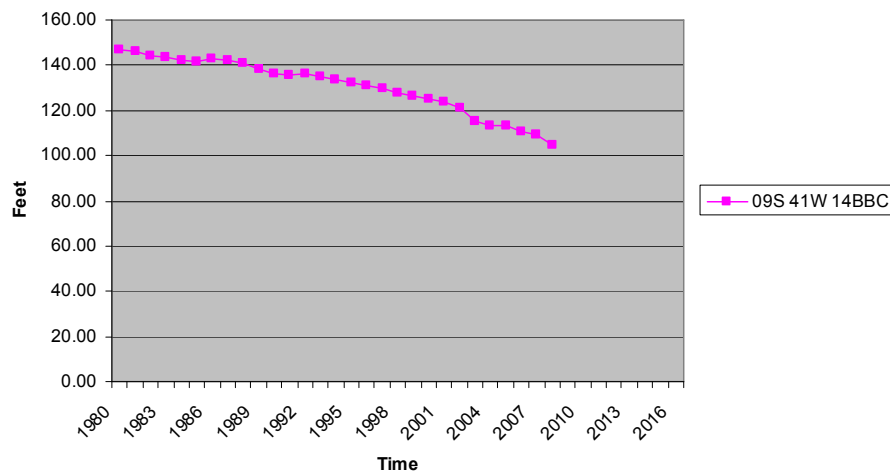
- Kd01_roads_04.shp
- Obsmstr-ST
- NW Sections -PLSS
- GMD4 HPA's



SH-1 HPA Sections and Observation Wells

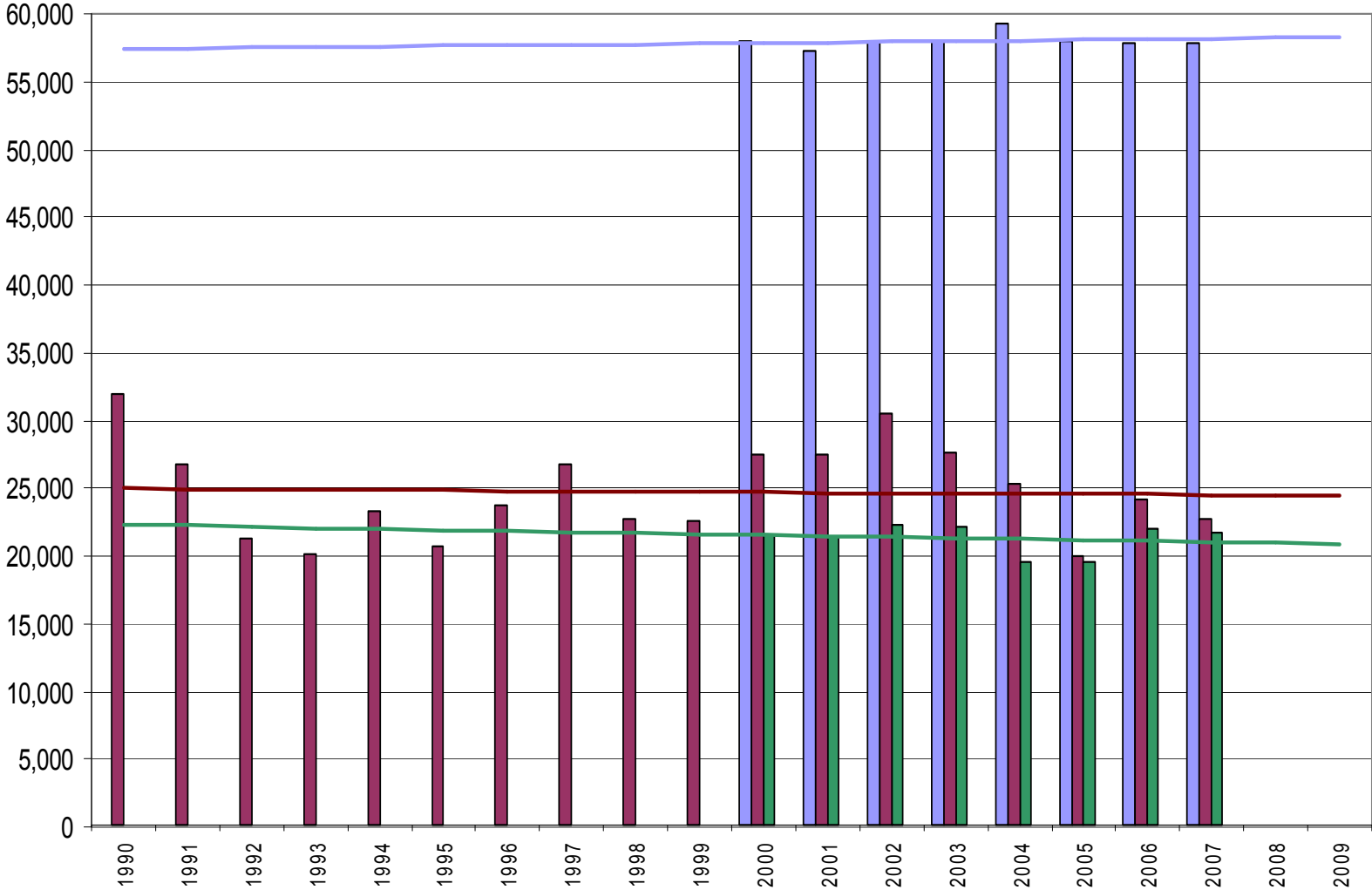


SH-1 Obs Well Saturated Thicknesses

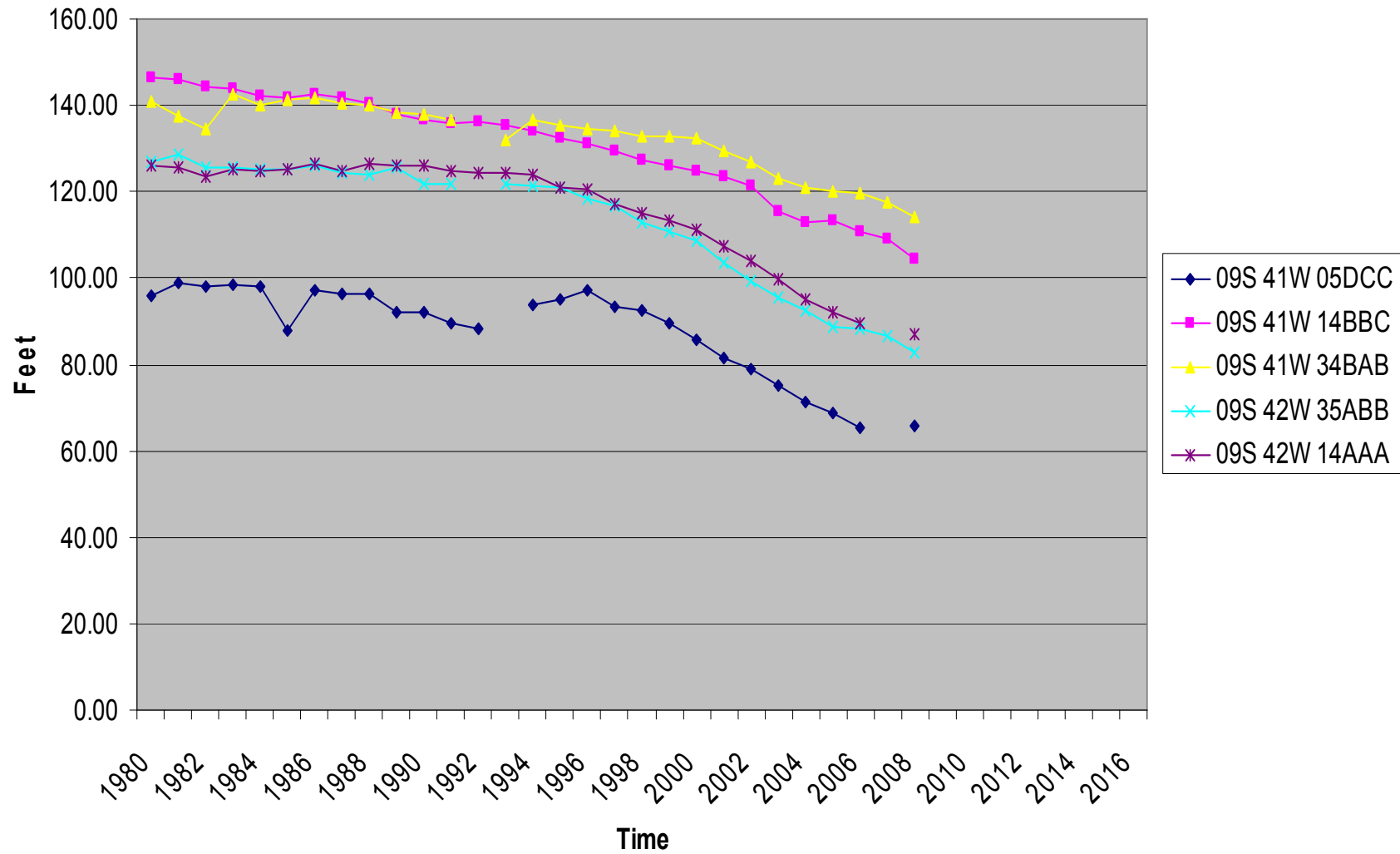


SH 1 Area: Appropriated AF & Pumped AF & Acres Irrigated by Year

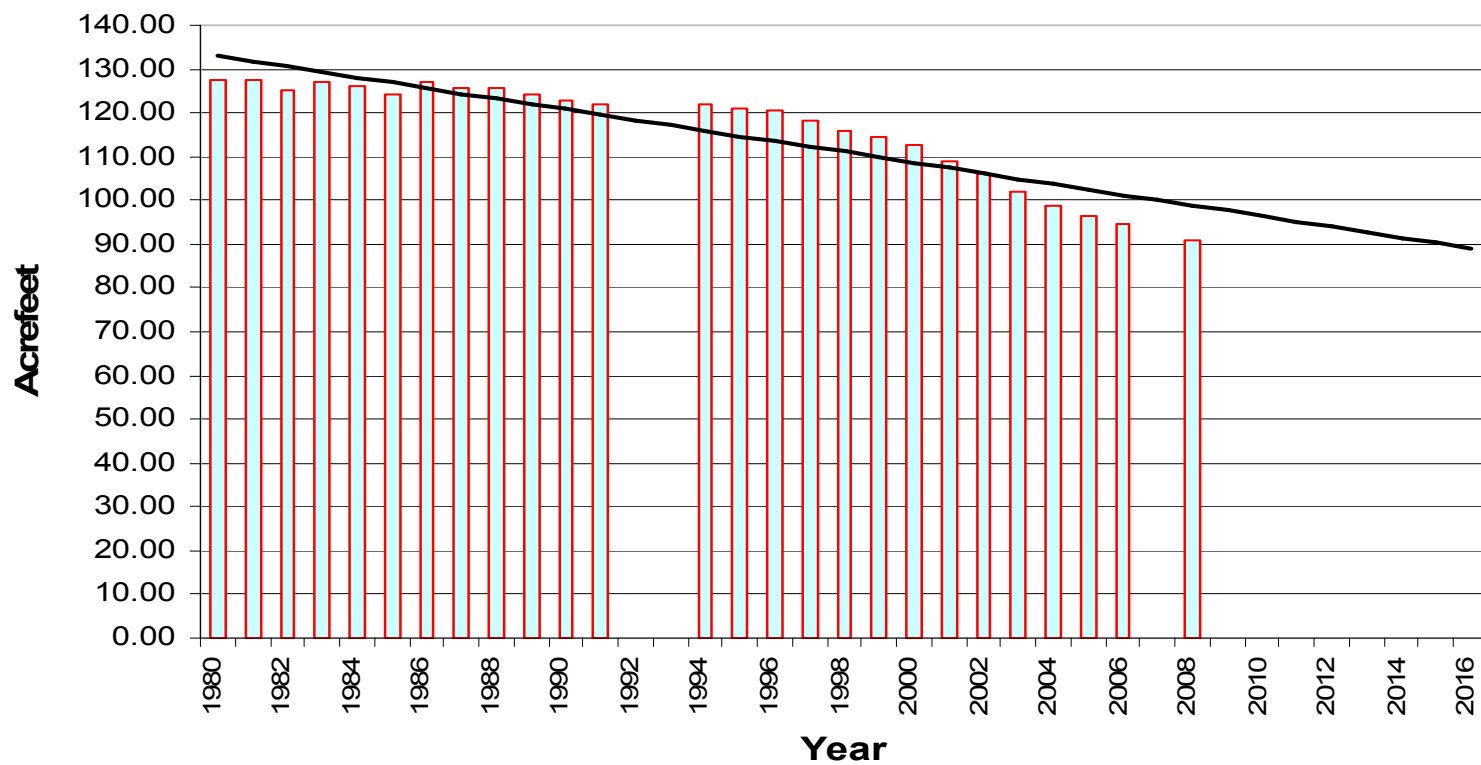
Acft



SH-1 Obs Well Saturated Thicknesses



1980-2008: Annual Average Saturated Thickness - SH 1 Obs Wells



Ave Sat Thick-All Obs

Linear (Ave Sat Thick-All Obs)