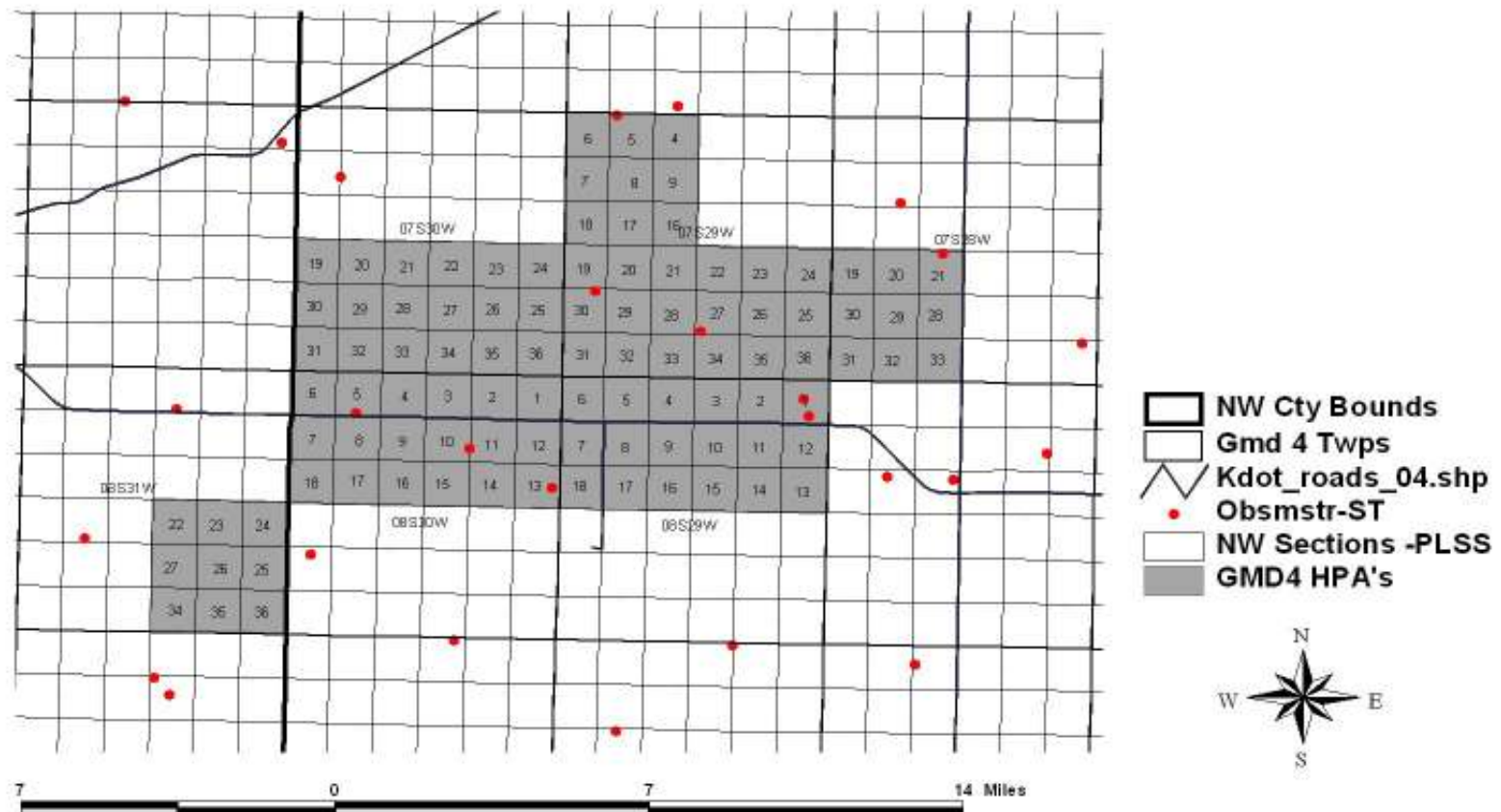
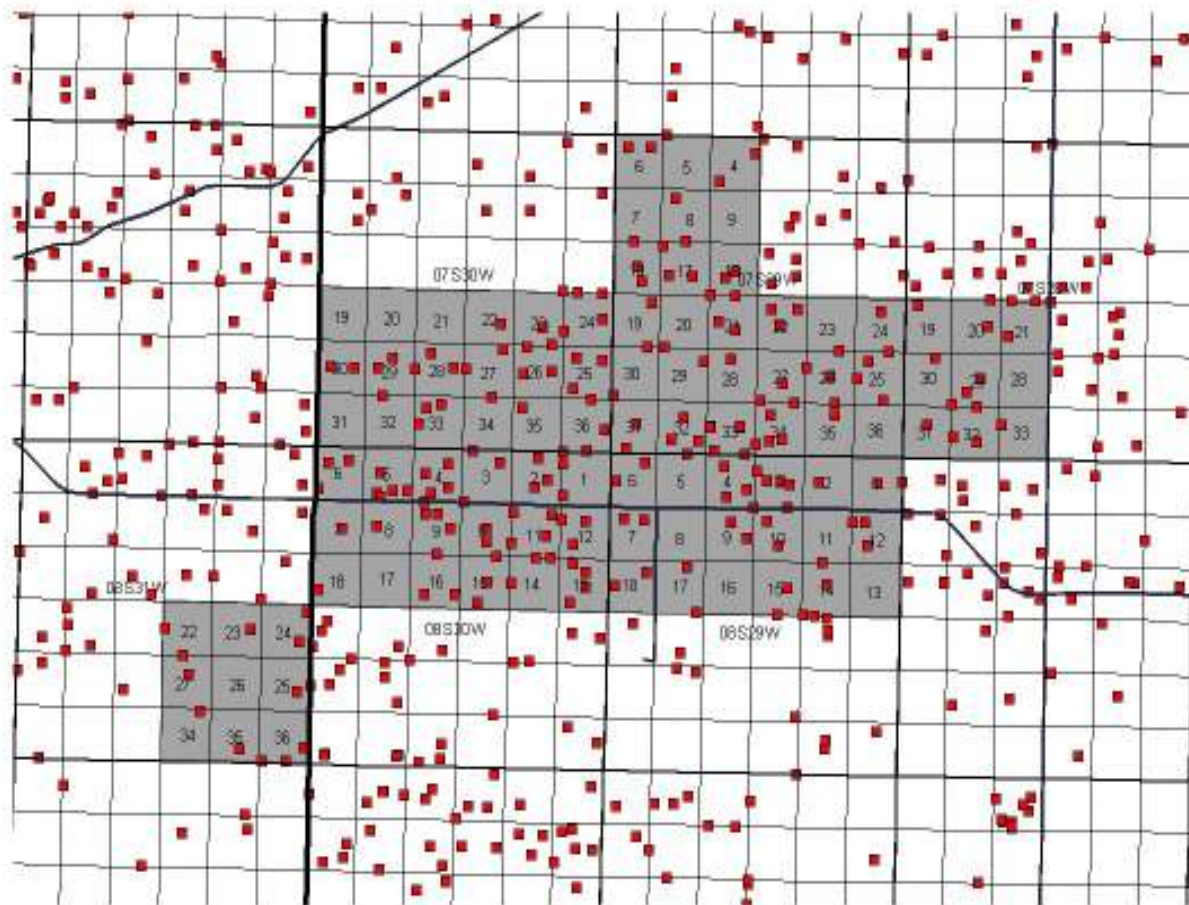


SD-6 Obs Wells



99 Sections; 63,360 Acres; 9 Obs Wells; 195 Permitted Wells;
 61,164 AF Appropriated; 30,164 AF Pumped; 24,803 Ac Irrigated

SD-6 Wells

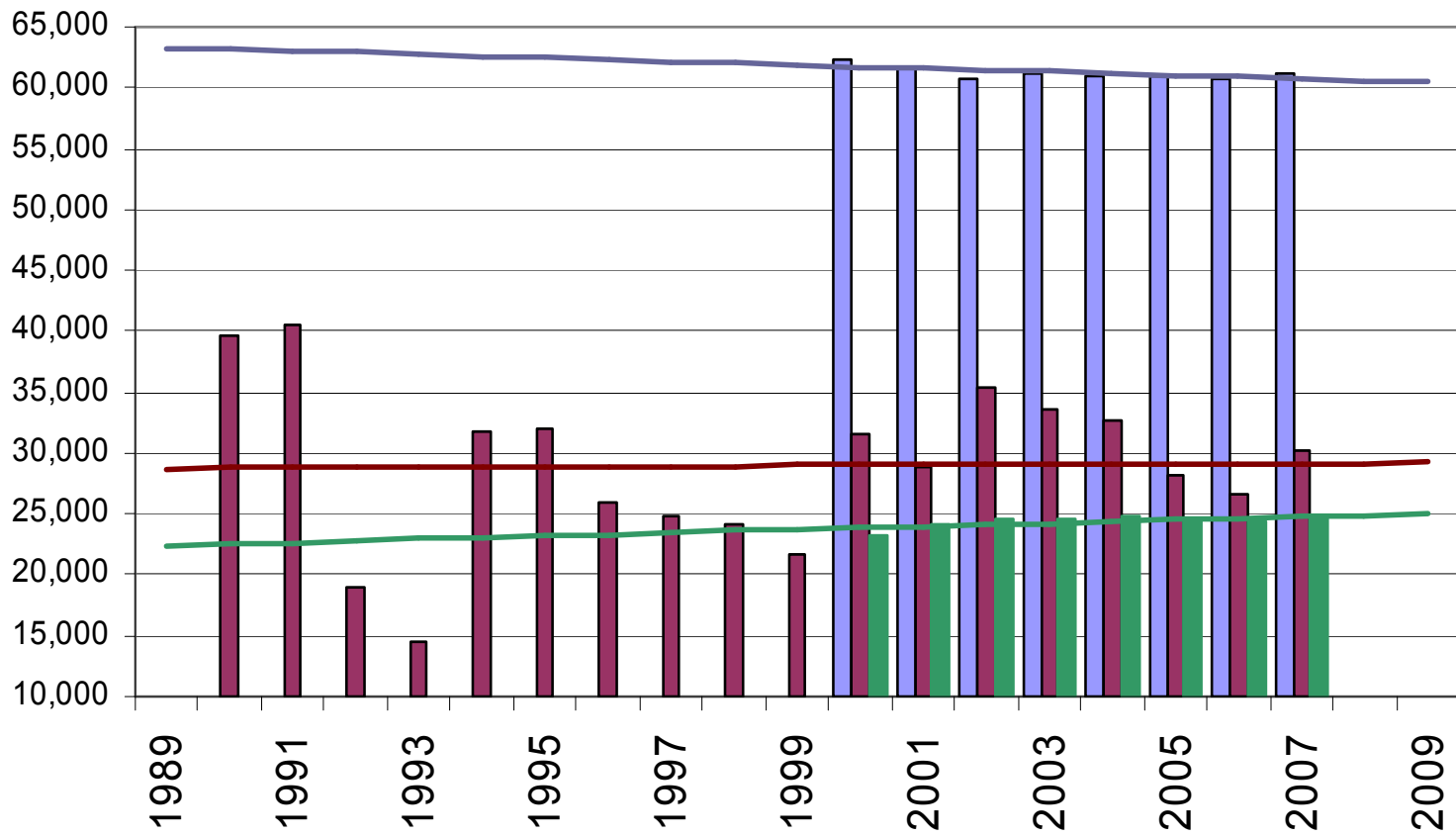


- NW City Bounds
- Gmd 4 Twps
- Kdot_roads_04.shp
- 2006 WIMAS set
- NW Sections -PLSS
- GMD4 HPA's

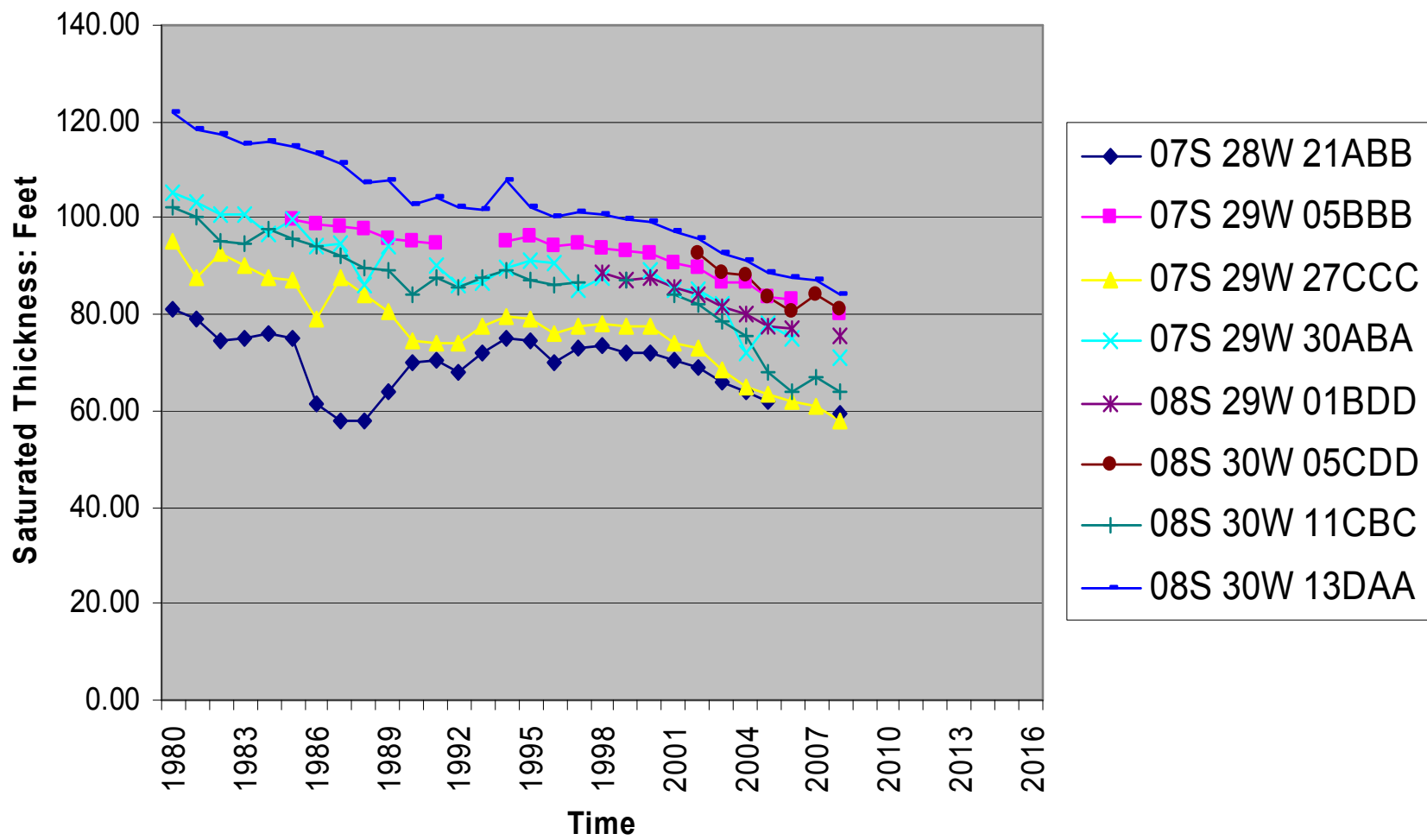


SD6 Area: Appropriated AF & Pumped AF & Acres Irrigated by Year

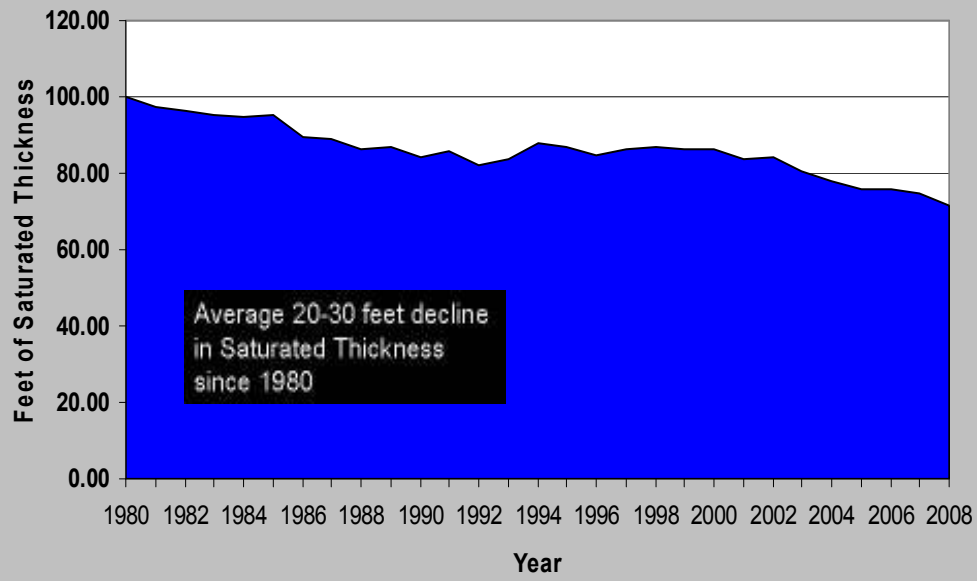
Acft



SD-6 Obs Well Hydrographs



Average Saturated Thickness



1980-2008: Annual Average Saturated Thickness

